



THE THINGS THAT YOU LOVE

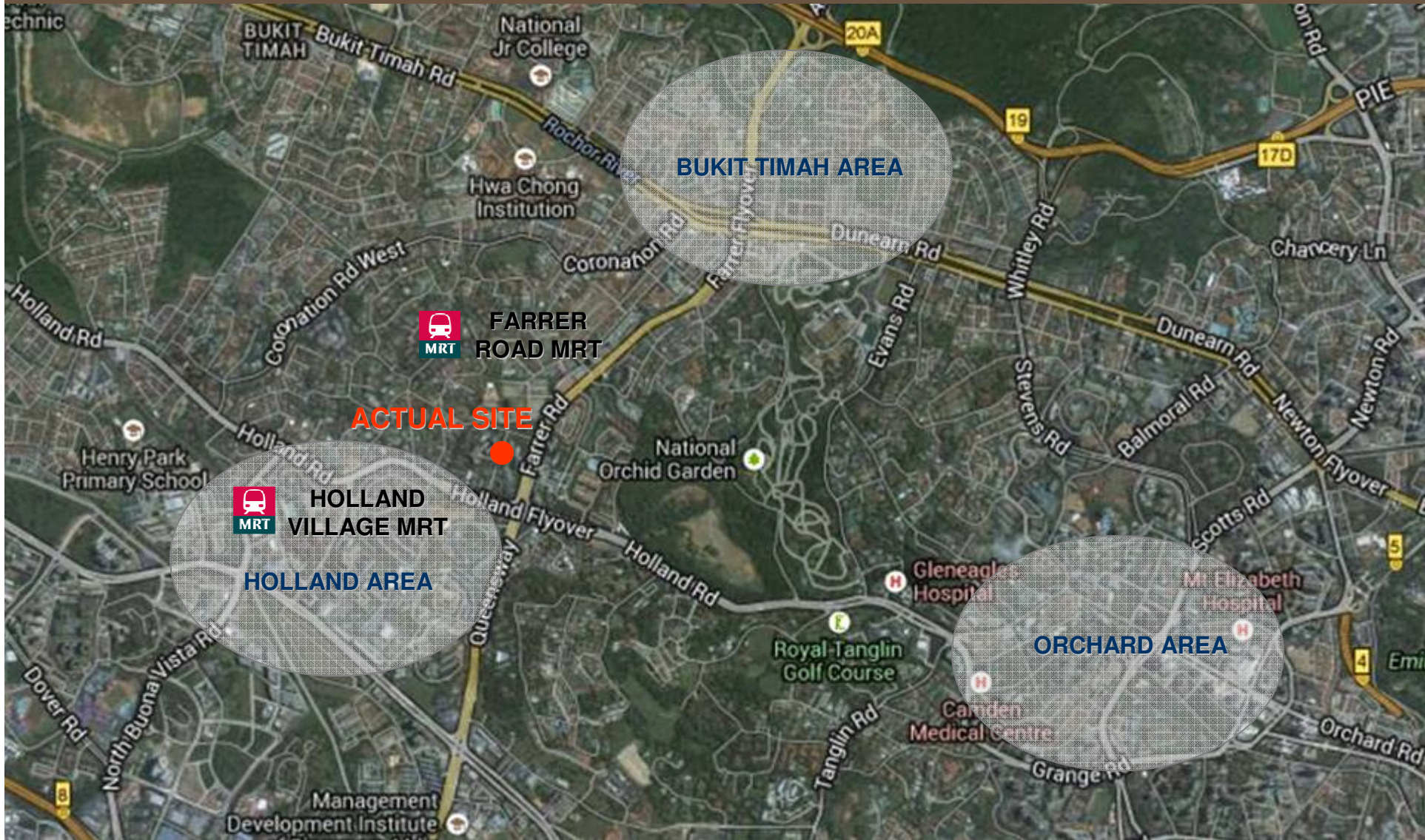
THE THINGS THAT YOU ARE

AND THE THINGS YOU NEVER WANT TO LOSE

PASS IT ON



LOCATION MAP



AERIAL VIEW OF LOCATION



FREEHOLD STATUS

**A LASTING LEGACY FOR
GENERATIONS TO ENJOY**

**HIGHLY DESIRABLE ADDRESS
LOCATED WITHIN
GOOD CLASS BUNGALOW ENCLAVE
PRIME DISTRICT 10**





ORCHARD ROAD



SINGAPORE BOTANIC GARDENS



DEMPSEY HILL



HOLLAND VILLAGE

THE WORLD AT YOUR FEET

ALL LIFE'S PLEASURES ARE WITHIN REACH



NANYANG PRIMARY SCHOOL



ANGLO-CHINESE SCHOOL

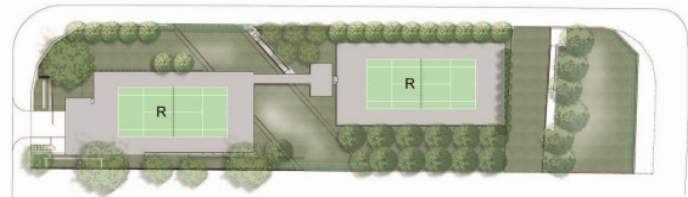


NATIONAL UNIVERSITY OF SINGAPORE

TOP ACADEMIC INSTITUTIONS IN THE VICINITY



SURROUNDING VIEW



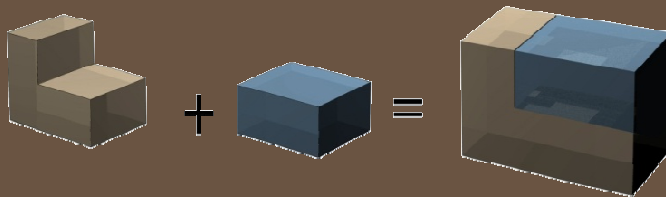
LEGEND

- A. Arrival Court
- B. Tree Avenue
- C. Kids' Pool
- D. Lap Pool
- E. Jacuzzi
- F. Pool Cabanas
- G. The Dining Lounge
- H. The Club
- I. The Gym
- J. Reflective Pool
- K. Floating Pavilion
- L. Pavilion
- M. Discovery Playground
- N. The Grill
- O. Fitness Corner
- P. The Forest Walk
- Q. Recreational Garden
- R. Tennis Courts
- S. Water Court
- T. Water Wall
- U. Tree Grove
- V. Side Gate

SITE PLAN

THOUGHTFUL INTERPLAY OF DESIGNS

LOFTY DOUBLE-VOLUME LIVING SPACE FOR 4-BEDROOM
EFFICIENT UNIT LAYOUT & EXCELLENT FITTINGS



4 BEDROOM UNIT
WITH DOUBLE
VOLUME LIVING

3 BEDROOM
UNIT





**DESIGNED BY SCDA'S INTERNATIONALLY ACCLAIMED ARCHITECT,
CHAN SOO KHIAN**

**HIS PERSONAL INSPIRATION IS TAKEN TO NEW HEIGHTS
WITH A HOLISTIC DESIGN APPROACH WHICH ALLOWED
EACH METICULOUSLY CRAFTED ELEMENT, THE BUILDING
ARCHITECTURE, LANDSCAPE AND INTERIOR , EXIST IN
PERFECT HARMONY WITH THE REST.**



TREE AVENUE

LUSH PLOT HIDDEN, AWAIT DISCOVERY





FIVE HECTARES OF LUSH GREENERY

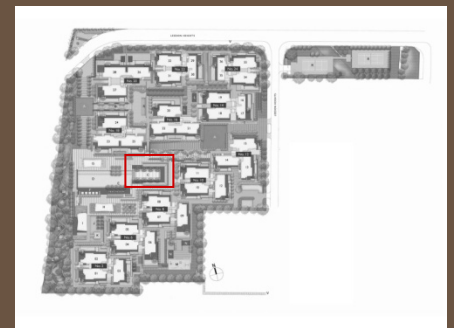




KID'S POOL

UNWIND AT YOUR VERY OWN TROPICAL RESORT

**ALL WHILST SURROUNDED BY NATURE, WITHOUT EVER LEAVING
YOUR HOME**





LAP POOL

**SLASH INTO A 50M LAP POOL
OR LOUNGE AT THE BESPOKE POOLSIDE CABANAS**





THE FOREST WALK

200M FOREST WALK

3 EXCLUSIVE CLUBHOUSES (THE DINING LOUNGE, THE CLUB & THE GYM)





SPACIOUS ISLAND KITCHEN

A HOME AS GRAND AS YOUR DREAMS



SHOW SUITE DEPICTING A GARDEN SUITE UNIT

**PRIVATE POOL AT GARDEN SUITES,
SKY SUITES AND PENTHOUSES**



DINING ROOM



MASTER BEDROOM



MASTER BATH



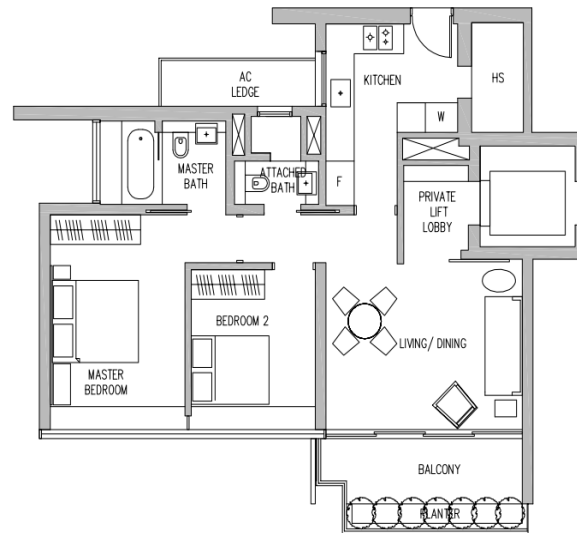
MASTER BATH

2 BEDROOM TYPE 2A

97 sqm / 1,044 sqft

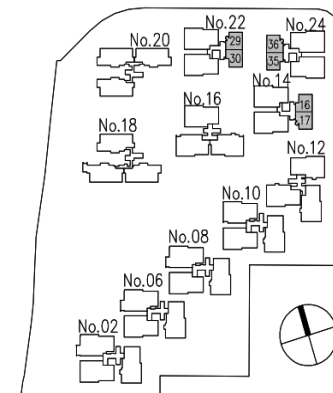
unit 02-17 / 30 / 36
unit 03-17 / 30 / 36
unit 04-17 / 30 / 36
unit 05-17 / 30 / 36
unit 06-17 / 30 / 36
unit 07-17 / 30 / 36
unit 08-17 / 30 / 36
unit 09-17 / 30 / 36
unit 10-17 / 30 / 36

Mirror Unit
unit 02-16 / 29 / 35
unit 03-16 / 29 / 35
unit 04-16 / 29 / 35
unit 05-16 / 29 / 35
unit 06-16 / 29 / 35
unit 07-16 / 29 / 35
unit 08-16 / 29 / 35
unit 09-16 / 29 / 35
unit 10-16 / 29 / 35



BUILDING PLAN REF : A1387-00356-2007-BP01, A1387-00356-2007-BP02, A1387-00356-2007-BP03, A1387-00356-2007-BP04
APPROVAL DATE : 19/04/2011, 25/01/2012, 12/06/2012, 17/12/2013

All areas stated herein include pvc, water feature (private pool), private lobby, bay windows, a/c ledges, planters, balconies, roof terraces, outdoor shower and voids where applicable.
All areas and measurements stated herein are approximate and subject to adjustment on final survey. Layout / location of wardrobes, kitchen cabinets, fan coil units, electrical points, door swing positions and plaster ceiling boards are subject to Architect's sole discretion and final design.

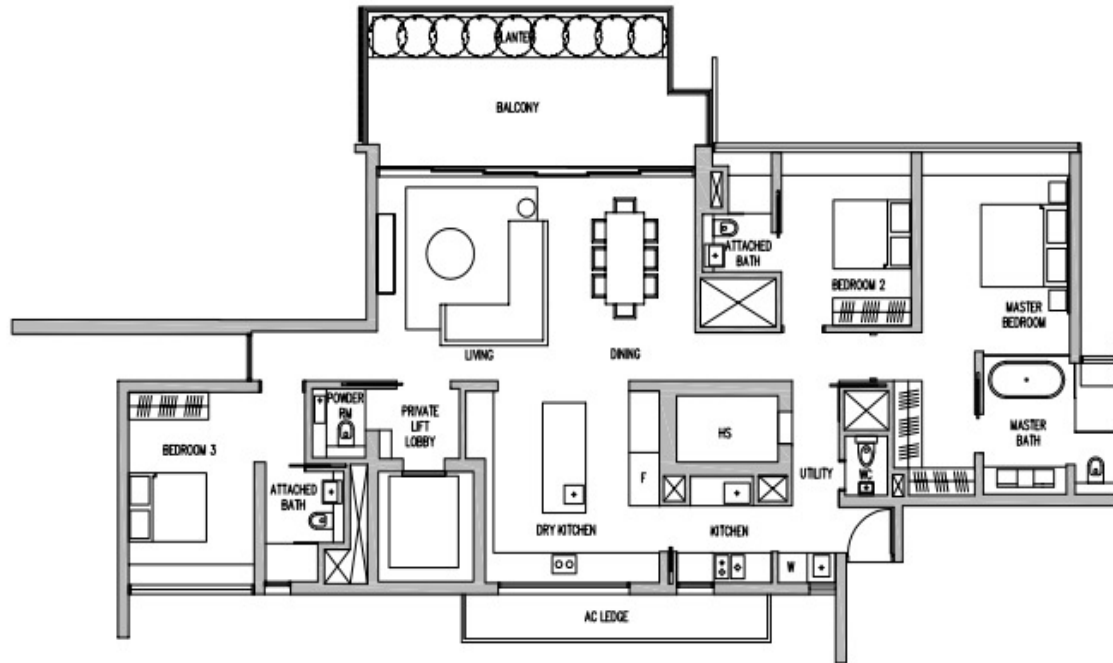


3 BEDROOM TYPE 3A

198 sqm / 2,131 sqft

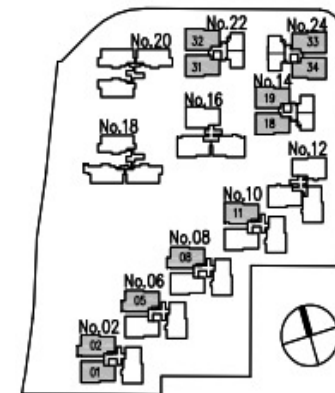
unit 04-02 / 05 / 08 / 11 / 19 / 32 / 34
 unit 06-02 / 05 / 08 / 11 / 19 / 32 / 34
 unit 08-02 / 05 / 08 / 11 / 19 / 32 / 34
 unit 10-02 / 05 / 08 / 11 / 19 / 32 / 34

Mirror Unit
 unit 04-01 / 18 / 31 / 33
 unit 06-01 / 18 / 31 / 33
 unit 08-01 / 18 / 31 / 33
 unit 10-01 / 18 / 31 / 33



BUILDING PLAN REF : A1387-00356-2007-BP01, A1387-00356-2007-BP02, A1387-00356-2007-BP03, A1387-00356-2007-BP04
 APPROVAL DATE : 19/04/2011, 25/01/2012, 12/06/2012, 17/12/2013

All areas stated herein include gas, water features (pools/spas), private lobby, bay windows, e/c ledges, planters, balconies, roof terraces, outdoor shower and walls where applicable.
 All areas and measurements stated herein are approximate and subject to adjustment on final survey. Layout / location of wardrobe, kitchen cabinets, fire call units, electrical points, door swing positions and plaster ceiling boards are subject to architect's site direction and final design.

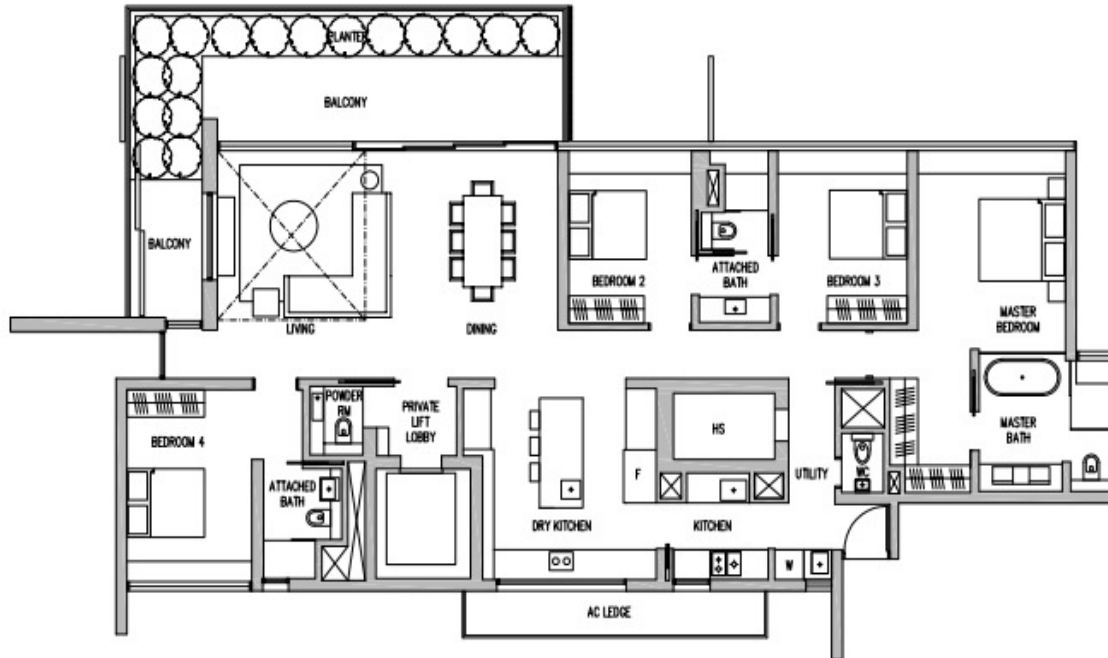


4 BEDROOM TYPE 4A

248 sqm / 2,669 sqft

unit 03-02 / 05 / 08 / 11 / 19 / 32 / 34
 unit 05-02 / 05 / 08 / 11 / 19 / 32 / 34
 unit 07-02 / 05 / 08 / 11 / 19 / 32 / 34
 unit 09-02 / 05 / 08 / 11 / 19 / 32 / 34

Mirror Unit
 unit 03-01 / 18 / 31 / 33
 unit 05-01 / 18 / 31 / 33
 unit 07-01 / 18 / 31 / 33
 unit 09-01 / 18 / 31 / 33



0 1m 2m 5m 10m

BUILDING PLAN REF : A1387-00356-2007-BP01, A1387-00356-2007-BP02, A1387-00356-2007-BP03, A1387-00356-2007-BP04
 APPROVAL DATE : 19/04/2011, 25/01/2012, 12/06/2012, 17/12/2013

All areas shaded herein include glass, water features (pools/pans), private lobby, key stations, a/c ledges, planters, balconies, roof terraces, outdoor shower and walls where applicable.
 All areas and measurements shaded herein are approximate and subject to adjustment on final survey. Layout / location of furniture, kitchen cabinets, fan coil units, electrical points, door swing positions and plaster ceiling boards are subject to architect's site observation and final design.

